

BLACKFRIARS Student Accommodation

(Unite Students Glasgow)

Private bedroom & private shower room and toilet (ensuite)	20-minute walk to school
Free WIFI Please ask at reception for Wi-Fi code	Shared kitchen/ living room with 5 or 6 other flat mates
Check in from 15:00	Check out before 11:00

Please note: Bedrooms are cleaned before your arrival, but you must provide your own cleaning materials during your stay, and you are responsible for the cleaning of the kitchen and your bedroom during your stay.

General Facilities

- Convenient location
- Caretakers on site 24 hours a day, 365 days a year
- CCTV surveillance and electronic door key card system for your security
- On-site management office
- On-site laundrette (£3.10 per wash & £1.70 per dry – download the MyUnite app to uploads funds and use the machines)
- Bicycle storage area
- Outside area with picnic benches

Flats

Each flat features en-suite bedrooms, a fully equipped kitchen and a comfortable living/dining room.

Each living has:

- 21" Colour TV with Freeview channels
- 2 x Large fridge freezers
- Cutlery, crockery & cooking utensils
- Vacuum cleaner, iron & ironing board and mop
- Kettle, microwave, toaster
- Hob & oven/grill
- Fire Extinguisher & Fire blanket
- Heat Detection System & Smoke Alarm

Study Bedrooms

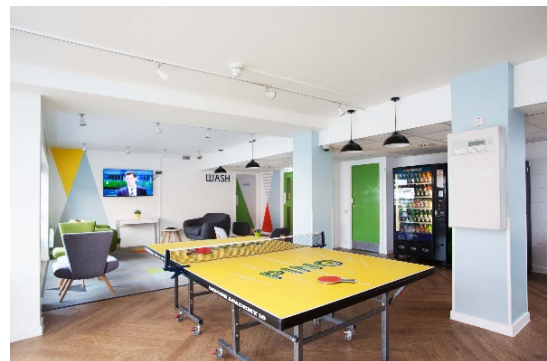
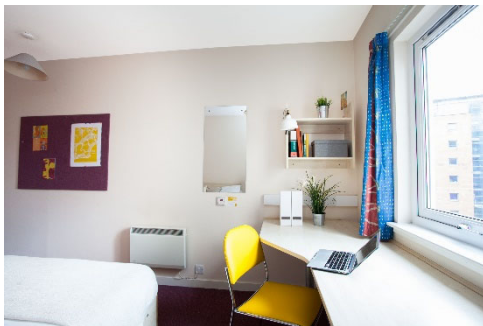
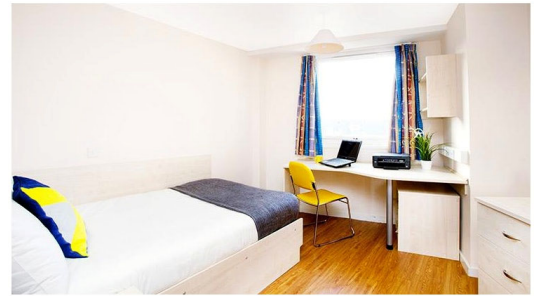
All bedrooms are en-suite with shower, toilet and wash basin.

Also:

- 3/4 Size bed
- Fully fitted wardrobe
- Desk and storage space
- Pin board
- Full length mirror
- Individually controlled heating
- Bedding (sheet, duvet and duvet cover, pillows and pillow cases)
- Please note- towels are **NOT** provided

Common room

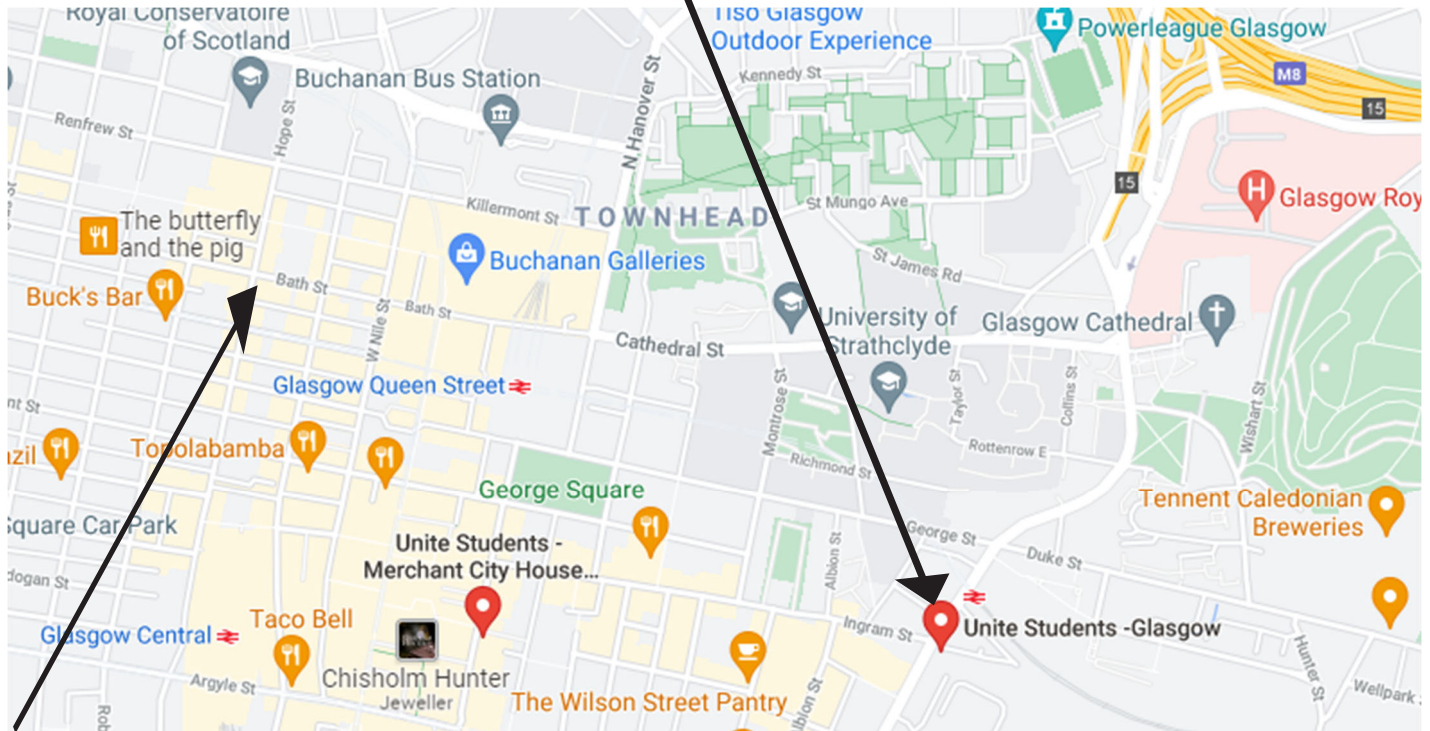
On the ground floor you will find a student lounge area available to all students which includes, Table tennis table, TV, PlayStation and sitting area.



Supermarkets nearby:

1. **Tesco Express:** 6-7 Merchant Building, High St, Glasgow G1 1NL
Opening times: 7am – 11 pm (Everyday)
2. **Sainsbury's Local:** 135 George St, Glasgow G1 1RD
Opening times: 7am – 7 pm (Everyday)
3. **ALDI:** 140 High St, Glasgow G1 1QF
Opening times: 7am – 10pm (Monday - Saturday) & 9am – 8pm (Sundays)

Blackfriars Accommodation -Unite Students
 4 Blackfriars Road, G1 1QL
 Tel: 0300 303 1611



Blackfriars Glasgow is in Glasgow’s city centre so there is not a lot of helpful public transport between it and GSE (don’t worry the walk is easy!)

- If you arrive from Glasgow Airport with a lot of luggage, you have some options:
- Take the bus from Glasgow Airport to Buchanan Bus station, and then take a taxi to Blackfriars Accommodation (Bus, £8.50, Taxi, £6)
 - Take a taxi direct from the Airport to Blackfriars Accommodation (About £25-£30)
 - Book a transfer with Glasgow School of English (you must book at least 1 week before you arrive = £45)

Checking in: The Blackfriars Accommodation Reception is open from 8am-8pm, Monday – Friday and 12.30pm – 4pm Saturdays.

**If you are checking in after this time you will need to telephone:
 Emergency contact centre on 0044 300 303 1611**

The security staff will come to open the door for you and take you to your room.

Checking out: Please drop your key in the black box at reception when leaving checking out.